

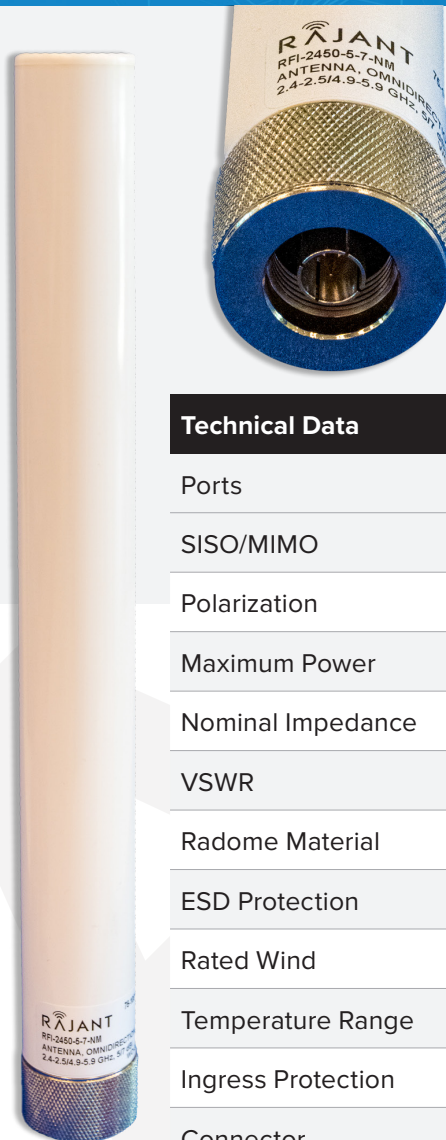
RFI-2450-5-7-NM

Dual-band 2.4–2.5 / 4.9–5.9 GHz Omnidirectional Antenna

The RFI-2450-5-7-NM omnidirectional antenna consists of a linear array encapsulated in a sealed radome that enables outdoor use. It offers dual-band operation covering frequencies from 2.4–2.5 GHz and 4.9–5.9 GHz for broadband applications. This simplifies fixed deployments by providing a single antenna that supports both 2.4 GHz and 4.9/5 GHz.

RFI-2450-5-7-NM Features

- 5 / 7 dBi gain (2.4–2.5 / 4.9–5.9 GHz)
- Type N male connector
- Sealed, UV stable, white, ASA radome for outdoor use
- 1.125" (28.6mm) radome diameter
- Should be used only for fixed installations with no significant shock and vibration



Technical Data

Ports	1
SISO/MIMO	SISO
Polarization	Vertical
Maximum Power	25 W
Nominal Impedance	50 Ohm
VSWR	< 2.0:1
Radome Material	ASA
ESD Protection	No
Rated Wind	125 mph (201 km/h)
Temperature Range	-40 °F to 185 °F (-40 °C to +85 °C)
Ingress Protection	IP67
Connector	Type N (male)
Mounting Hardware	Not Included

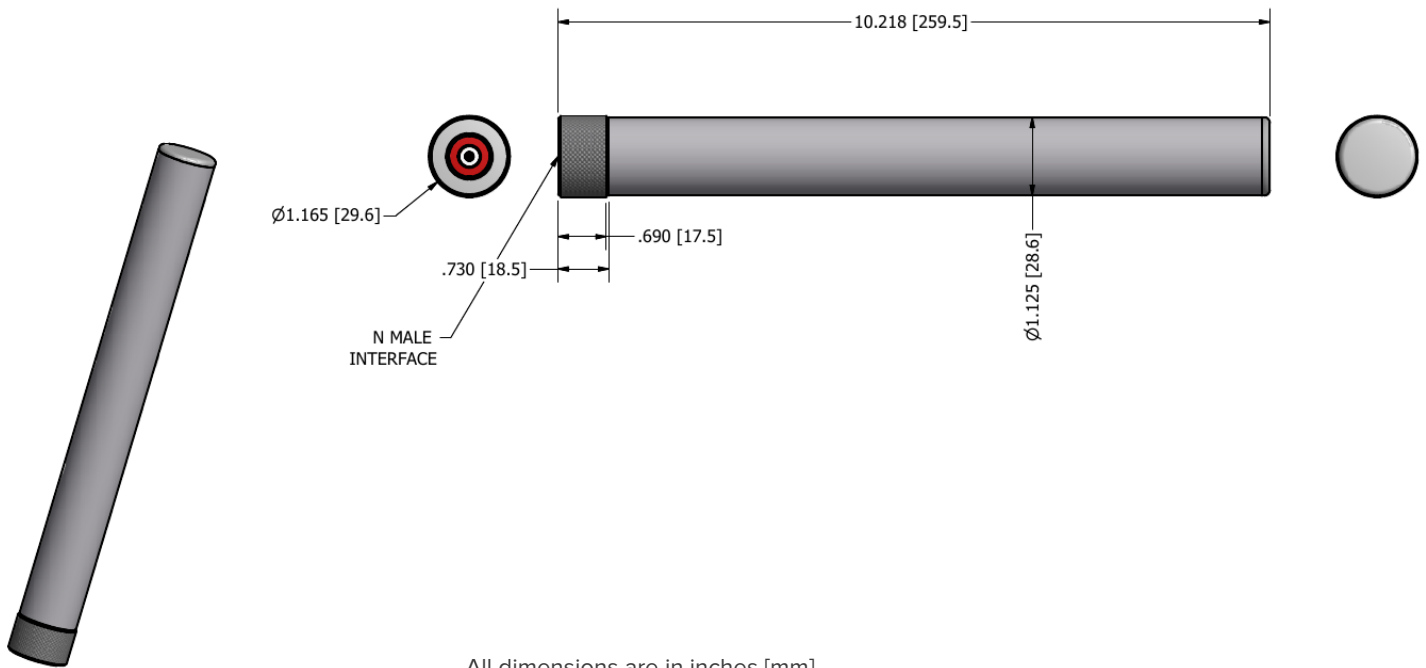
RF/Electrical Specifications

Rajant Part Number	Model	Frequency Range	Nominal Gain	Return Loss	E-Plane Beamwidth	Connector Type
75-100162-001	RFI-2450-5-7-NM	2.4-2.5 / 4.9-5.9 GHz	5 / 7 dBi	> 9.5 dB	25° / 15°	N male

Mechanical Specifications

Rajant Part Number	Model	Weight	Height and Diameter	Rated Wind Load	Bending Moment at Rate Wind	Equivalent Flat Plate Area
75-100162-001	RFI-2450-5-7-NM	5.7 oz (161 g)	10.218" (25.95 cm) 1.125" (28.6 mm)	TBD	TBD	TBD

RFI-2450-5-7-NM Dimensions



All dimensions are in inches [mm]