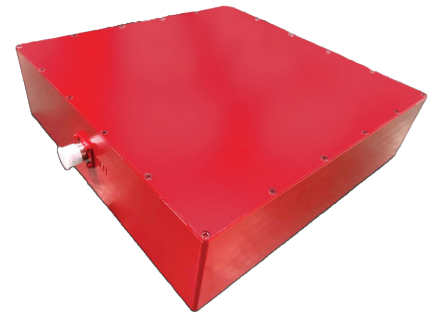


ADRF-BSF-14

Band Stop Filter for Band 14



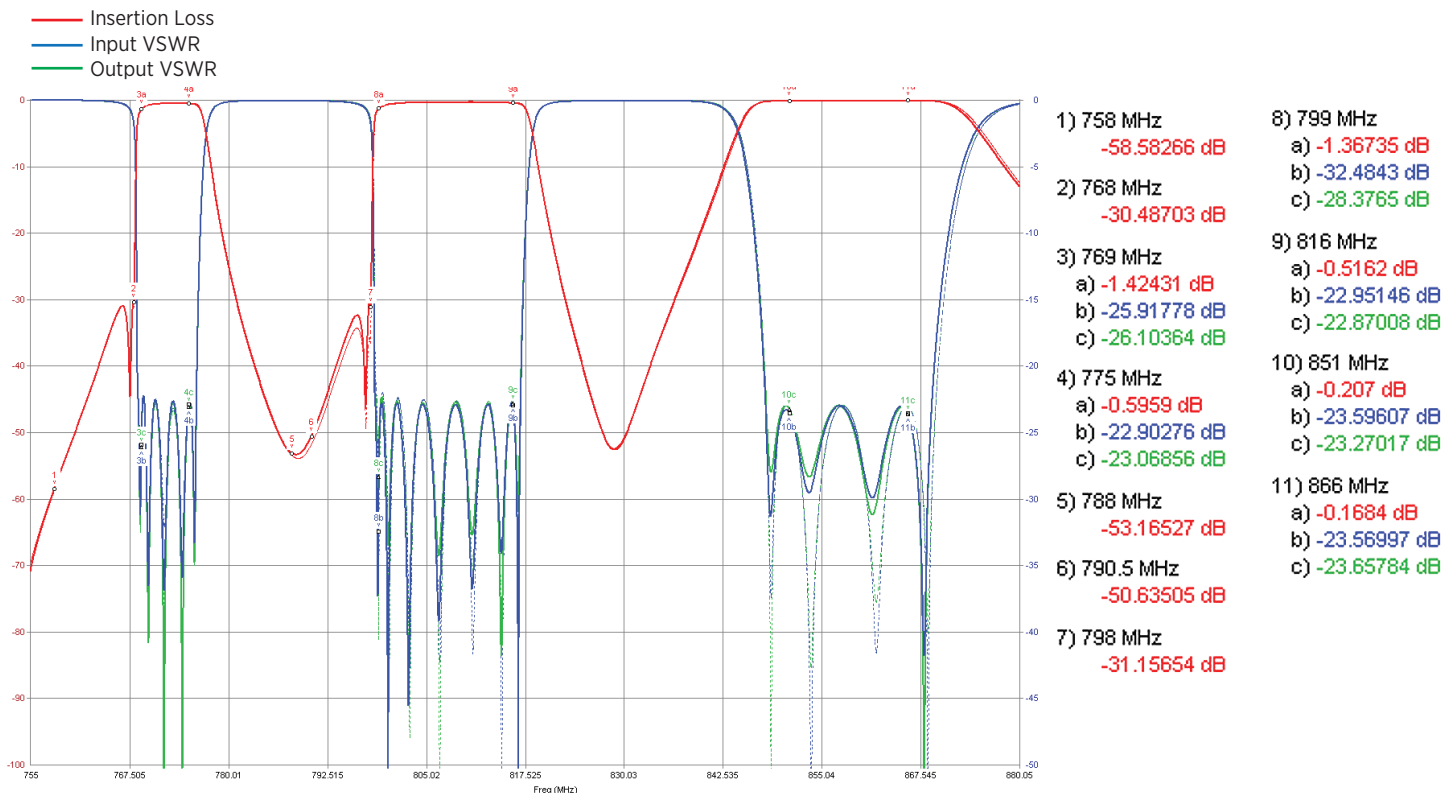
Electronic Specifications

Frequency Range	769 - 775 MHz 799 - 816 MHz 851 - 866 MHz
Insertion Loss	1.5 dB (max)
Rejection (min)	30 dB @ 788 - 798 MHz 30 dB @ 758 - 768 MHz
VSWR	1.3:1
PIMD	153 dBc (min) @ 2 x 20 W
Weather Rating	IP67
Input Power	50 W

Mechanical Specifications

Dimension (W x D x H)	11.96 x 11.89 x 3.15 in (304 x 302 x 80 mm)
Connector	N-Type (Female)
Color	RED (Pantone 200C)
Operation Temperature	14°F to 133°F (-10°C to +55°C)

Notch Filter Plots



Web www.adrftech.com

Tel +1 818.840.8131 Fax +1 818.840.8138

Technical/Customer Support +1 800.313.9345

3116 West Vanowen Street Burbank, CA 91505

