

cnWave™ 60 GHz V2000

Client Node

QUICK LOOK:

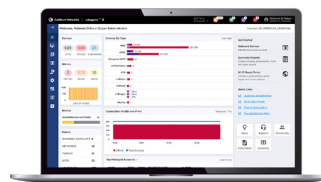
- Supports 57 to 66 GHz
- Up to 3.6 Gbps (1.8 Gbps DL and 1.8 Gbps UL). Future channel bonding feature will increase capacity to up to 5.2 Gbps
- Auto-beamforming, +/- 10° horizontal, +/- 4.0° vertical
- 2.5 GbE PoE input AND 2.5 GbE 802.3at PoE output port for powering external devices
- 802.11ay standard technology with Terragraph certification



Designed for high-speed and high-density deployments

Cambium Networks' cnWave 60 GHz solution provides easy, fast and cost-effective wireless gigabit connectivity for edge access and/or high-capacity backhaul for edge access solutions at a significantly lower TCO than fiber infrastructure. Service providers and enterprises now have access to gigabit for business and residential connectivity, backhaul for Wi-Fi access or LTE/5G small cell. cnWave solutions are highly efficient at handling high-density deployments in cities and suburban areas.

The V2000 features a 2.5 GbE PoE input port as well as a 2.5 GbE PoE 802.3at output port for powering Wi-Fi access points or video surveillance cameras. This makes the V2000 especially well-suited to backhaul Cambium's XV2 series of outdoor Wi-Fi AP's.



Cloud and on-premises management

cnWave 60 GHz operates with Cambium Networks' cnMaestro management system. cnMaestro™ is a cloud-based or on-premises software platform for secure, end-to-end network control. cnMaestro wireless network manager simplifies device management by offering full network visibility and zero-touch provisioning. View and perform a full suite of wireless network management functions in real time. Optimize system availability, maximize throughput and meet emerging needs of business and residential customers.

cnWave™ 60 GHz V2000 Client Node

Specifications

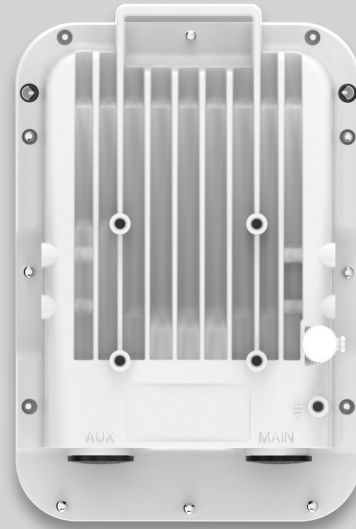
Spectrum		Antenna	
Frequency Range	57 to 66 GHz in a single SKU	Gain	34.5 dBi
Channel Width	2.16 GHz, 4.32 GHz*	Type	Integrated
Channel Bonding*	Up to 2 adjacent channels	Beamforming Scan Range	+/- 10° azimuth, +/- 4.0° elevation
Mode of Operation	PMP Client or PTP	Powering	
Interface		Type	802.3at
Channel Access	TDMA/TDD	Power Consumption	18W (48W when using PoE output port)
Ethernet Interface	1 x 2.5 GbE PoE Input 1 x 2.5 GbE PoE 802.3at Output	Physical	
Networking		Environmental	IP66/67
Protocols Supported	IPv4, IPv6, Layer2 Bridge, Layer3 IPv6 Routing, Open/R mesh	Temperature	-40°C to 60°C (-40°F to 140°F)
Network Management	cnMaestro, HTTP, HTTPS, SNMP v2c & v3	Mean Time Between Failure	> 40 years
MTU	2,000 bytes	Weight	1.9 kg (4.2 lbs.) with bracket
VLAN	802.1ad (QinQ), 802.1Q with 802.1p priority	Dimensions H x W x D	249 x 166 x 220 mm (9.8 x 6.5 x 8.7 in)
Security		Wind Survival	200 km/h (124 mph)
Encryption	128-bit AES	Performance	
Firmware Security	Signed Firmware Images	Modulation & Coding Schemes	MCS-0 (BPSK) to MCS-12 (16-QAM-3/4)
Performance		Latency	< 1 ms
Maximum EIRP	49 dBm		

cnWave™ 60 GHz V2000 Client Node

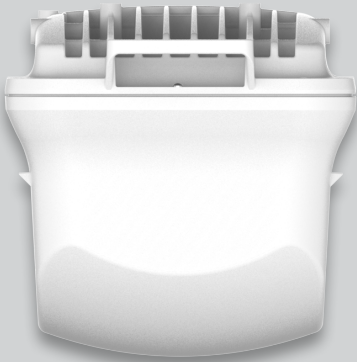
Front



Back



Top



Bottom



Side



Rear View
Pole Mounted



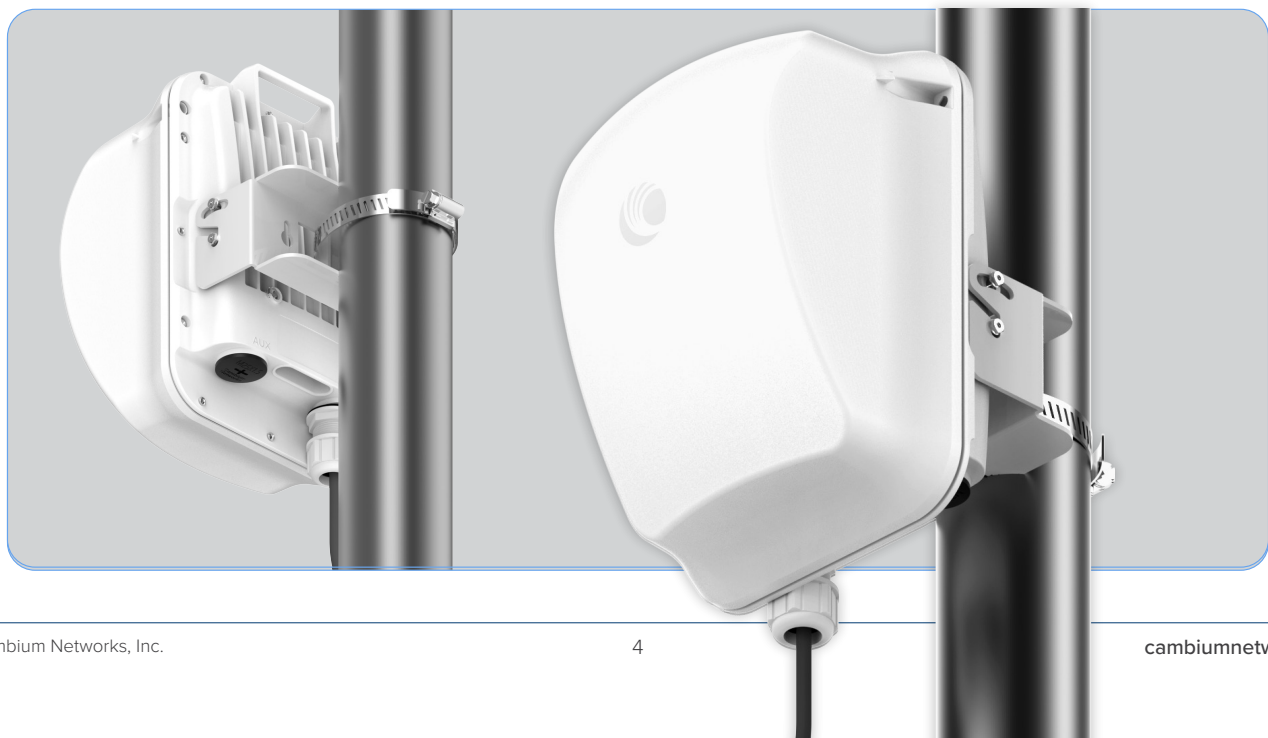
cnWave™ 60 GHz V2000 Client Node

cnWave 60 GHz V2000 Ordering Information

C600500C020A	60GHz cnWave V2000 Client Node 30W with US cord
C600500C026A	60GHz cnWave V2000 Client Node 30W with Israel Cord
C600500C027A	60GHz cnWave V2000 Client Node 30W with South Africa Cord
C600500C028A	60GHz cnWave V2000 Client Node 30W with India Cord
C600500C029A	60GHz cnWave V2000 Client Node 30W with no Cord
C600500C030A	60GHz cnWave V2000 Client Node, no power supply and no power cord
C600500C031A	60GHz cnWave V2000 Client Node 30W with EU cord
C600500C032A	60GHz cnWave V2000 Client Node 30W with UK Cord
C600500C033A	60GHz cnWave V2000 Client Node 30W with ANZ Cord
C600500C034A	60GHz cnWave V2000 Client Node 30W with Brazil Cord
C600500C035A	60GHz cnWave V2000 Client Node 30W with Argentina Cord

cnMaestro Management Ordering Information

MSX-SUB-T4-1	cnMaestro X for cnWave: Advanced management and includes CC Pro for Tier4; 5-year subscription / Tier4 device; Tier4 device include Client Node
MSX-SUB-T4-3	cnMaestro X for cnWave: Advanced management and includes CC Pro for Tier4; 5-year subscription / Tier4 device; Tier4 device include Client Node
MSX-SUB-T4-5	cnMaestro X for cnWave: Advanced management and includes CC Pro for Tier4; 5-year subscription / Tier4 device; Tier4 device include Client Node



cnWave™ 60 GHz V2000 Client Node

Extended Warranty, Cambium Care and cnMaestro Management Ordering Information

EW-E1CNWV2000-WW	60 GHz V2000 Extended Warranty, 1 Additional Year
EW-E2CNWV2000-WW	60 GHz V2000 Extended Warranty, 2 Additional Years
AR-E0CNWV2000-WW	60 GHz V2000 Upgrade to All Risks Advanced Replacement Program during 3-year standard warranty
AR-E1CNWV2000-WW	60 GHz V2000 All Risks Advance Replacement, 1 Additional Year
AR-E2CNWV2000-WW	60 GHz V2000 All Risks Advance Replacement, 2 Additional Years
CCADV-SUP-V2000-1	Cambium Care Advanced, 1-year support for one V2000. 24x7 TAC support, SW updates, and NBDS advance replacement for HW
CCADV-SUP-V2000-3	Cambium Care Advanced, 3-year support for one V2000. 24x7 TAC support, SW updates, and NBDS advance replacement for HW
CCADV-SUP-V2000-5	Cambium Care Advanced, 5-year support for one V2000 . 24x7 TAC support, SW updates, and NBDS advance replacement for HW
CCADV-UPG-V2000-1	Cambium Care Advanced Add-on to cnMaestro X, 1-year support for one V2000. 24x7 TAC support, SW updates, and NBDS advance replacement for HW
CCADV-UPG-V2000-3	Cambium Care Advanced Add-on to cnMaestro X, 3-year support for one V2000. 24x7 TAC support, SW updates, and NBDS advance replacement for HW
CCADV-UPG-V2000-5	Cambium Care Advanced Add-on to cnMaestro X, 5-year support for one V2000. 24x7 TAC support, SW updates, and NBDS advance replacement for HW
CCPRO-SUP-V2000-1	Cambium Care Pro, 1-year support for one V2000. 24x7 TAC support, SW updates
CCPRO-SUP-V2000-3	Cambium Care Pro, 3-year support for one V2000. 24x7 TAC support, SW updates
CCPRO-SUP-V2000-5	Cambium Care Pro, 5-year support for one V2000. 24x7 TAC support, SW updates
CCPRM-SUP-V2000-1	Cambium Care Prime, 1-year support for one V2000. 24x7 TAC SLA support, SW updates, and ARAR for HW
CCPRM-SUP-V2000-3	Cambium Care Prime, 3-year support for one V2000. 24x7 TAC SLA support, SW updates, and ARAR for HW
CCPRM-SUP-V2000-5	Cambium Care Prime, 5-year support for one V2000. 24x7 TAC SLA support, SW updates, and ARAR for HW

ABOUT CAMBIUM NETWORKS

Cambium Networks empowers millions of people with wireless connectivity worldwide. Its wireless portfolio is used by commercial and government network operators as well as broadband service providers to connect people, places and things. With a single network architecture spanning fixed wireless and Wi-Fi, Cambium Networks enables operators to achieve maximum performance with minimal spectrum. End-to-end cloud management transforms networks into dynamic environments that evolve to meet changing needs with minimal physical human intervention. Cambium Networks empowers a growing ecosystem of partners who design and deliver gigabit wireless solutions that just work.