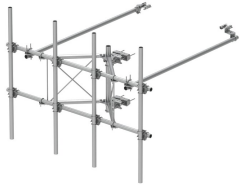


SFG23HDX-10-4-96



G23HDX High Capacity Sector Frame, 10.5 ft x 2.88 in OD face pipes, includes four 2.88 OD x 96 in antenna pipes

Product Classification

| | |
|-----------------------|----------------------------------|
| Product Type | High capacity Tower sector frame |
| Product Series | G2 |
| Ordering Note | NSTD445 Compliant |

General Specifications

| | |
|--------------------------|--|
| Application | 4G LTE antenna/radio mount |
| Mounting | Angle 60°, 203.2 mm (8 in) Straight or tapered legs up to 203.2 mm (8 in) OD |
| Patent Number | Patent pending |
| Pipe, quantity | 4 |
| Sectors, quantity | 1 |
| Tower Taper | Non-tapered Tapered |

Dimensions

| | |
|-----------------------------------|----------------------|
| Height | 2,438.4 mm 96 in |
| Face Width | 3.2 m 10.5 ft |
| Width | 3,200.4 mm 126 in |
| Pipe Length | 2,438.4 mm 96 in |
| Face Support Pipe Diameter | 73.025 mm 2.875 in |
| Mounting Diameter, maximum | 218.44 mm 8.6 in |
| Mounting Diameter, minimum | 38.1 mm 1.5 in |
| Pipe Outer Diameter | 73.025 mm 2.875 in |
| Stand-off Distance | 1,066.8 mm 42 in |

Material Specifications

SFG23HDX-10-4-96

Material Type Hot dip galvanized steel

Mechanical Specifications

Wind Rating For Specifications, please contact steelproducts@commscope.com or call 800-255-1479

Wind Rating Test Method TIA/EIA-222-G

Environmental Specifications

Man Rating 500 lb vertical man load at 15 mph (BWS)

Packaging and Weights

Included Frame | Pipe mounts | Plain end pipes (4) | Stiff arms (2) | Tower attachment

Packaging quantity 1

Regulatory Compliance/Certifications

Agency

ISO 9001:2015



Classification

Designed, manufactured and/or distributed under this quality management system

* Footnotes

Wind Rating BWS—Base Wind Speed; FBC—Florida Building Code

Man Rating BWS—Base Wind Speed