



Public Safety Wireless Communications Solutions



Providing critical in-building communications for first responders and emergency services when it matters most.

For over 20 years Westell has been a trusted partner for reliable in-building wireless solutions for public safety. Our public safety product portfolio includes software-defined BDAs and donor and indoor antennas including a full line of high performance passives components to support VHF, UHF 700, 800 & 900 MHz band.

Many jurisdictions are adopting the latest NFPA or IFC codes and standards for Emergency Radio Responder Communications Systems. Our Public Safety products are code compliant and deliver the lowest TCO in the industry, making Westell one of the most trusted brands and a preferred vendor for many AHJs, RF consultants, distributors, and system integrators.

Trust the experts at Westell on your next ERCES project.



WESTELL

WESTELL.COM

WESTELL® Public Safety Portfolio

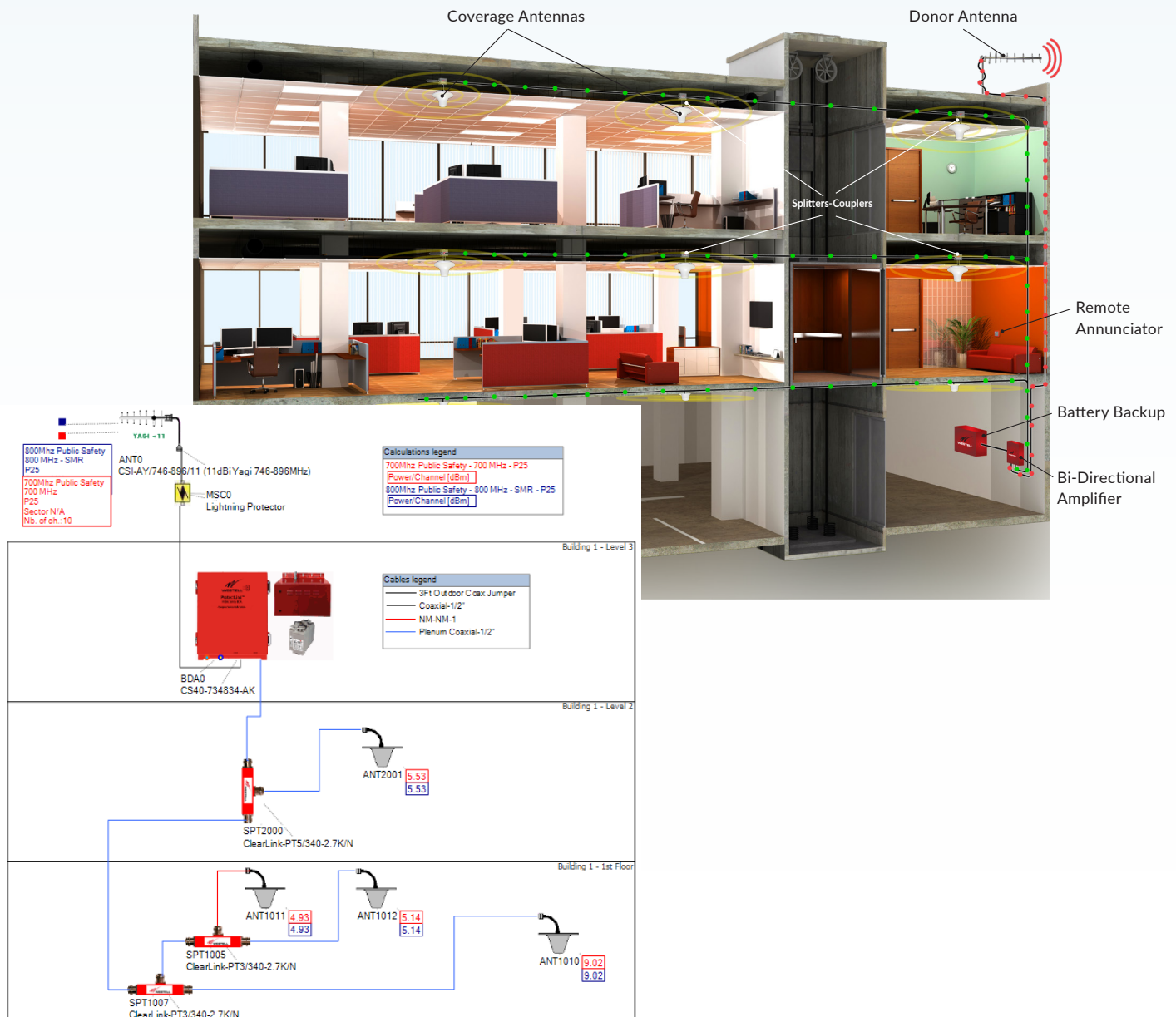
Westell offers some of the most complete solution sets for public safety in-building coverage with a focus on solutions that are easier to install, easier to get AHJ acceptance, and reduce total cost of ownership. Our innovative technology helps to assure that our BDAs don't cause interference to the public safety radio networks.

Solutions include:

- Donor antennas
- BDAs/signal boosters
- Battery backup solutions
- Passives (splitters, couplers, tappers, etc.)
- Coverage antennas
- Annunciator panels

Services include:

- ROM/BOM creation
- ERRCS design assistance
- Training and certification on Westell products
- Commissioning and installation services (provided by our local Westell partners)



ProtectLink™ Class A/B BDAs



The Westell ProtectLink Public Safety BDAs represent the next revolution in Public Safety DAS design, offering the most flexible platform available on the market. The UL2524 Listed platform includes 700/800 MHz band support, 1 Watt and 2.5 Watt RF output options, Class A or Class B operation, single-band or dual-band operation, all easily software license upgradeable. And with the addition of an Optical Master Unit, the same BDA can expand to support up to 8 optical remote units to expand the coverage area. Westell's ProtectLink public safety BDAs features one of the smallest form factors of any BDA on the market.

All versions include a full-featured, easy-to-use web GUI. The product also includes the following features: Channelized squelch, intelligent oscillation management, dedicated FirstNet® filter profile, built-in isolation test, NFPA/UL2524 alarm capabilities, a built-in communication link for an optional remote annunciator panel, built-in battery backup circuitry, and accessory outputs to add fiber DAS remotes. Class A units include 32 filters per band with individual filter bandwidths from 12.5KHz to full band. Class B units include four individual filters starting at 250KHz bandwidth to full band.

Part Number	Description
CS40-734834-00D-A0	Dual-band-700/800 MHz, 2.5 watt, class A/B.
CS40-734834-00D-B0	Dual-band-700/800 MHz, 2.5 watt, class B.
CS40-730830-00D-A0	Dual-band-700/800 MHz, 1 watt, class A/B.
CS40-734000-00D-A0	Single-band 700MHz, 2.5 watt, class A/B.
CS40-000834-00D-A0	Single-band 800MHz, 2.5 watt, class A/B.
CS40-ANNUNC	BDA Remote annunciator, for monitoring a single device.
CS40-PWRUPGRADE	Upgrade license from 1 watt to 2.5 watts.
CS40-CLAUPGRADE	Upgrade license from class B to class A/B.

*For more information on Westell's Limited Product Warranty and Return Policy go to: www.westell.com/warranty



CS40-ANNUNC

BDA Kits

These BDA kits come conveniently packaged on a single pallet with the BDA, a BBC-003 battery cabinet, plus two 100AH batteries for 12 hour backup run time. Be sure to order the remote annunciator (CS40-ANNUNC) separately if needed.

Part Number	Description
CS40-734834-AK	Dual-band-700/800 MHz, 2.5 watt, class A/B kit.
CS40-734834-BK	Dual-band-700/800 MHz, 2.5 watt, class B kit.
CS40-730830-AK	Dual-band-700/800 MHz, 1 watt, class A/B kit.
CS40-734000-AK	Single-band-700 MHz, 2.5 watt, class A/B kit.
CS40-000834-AK	Single-band-800 MHz, 2.5 watt, class A/B kit.



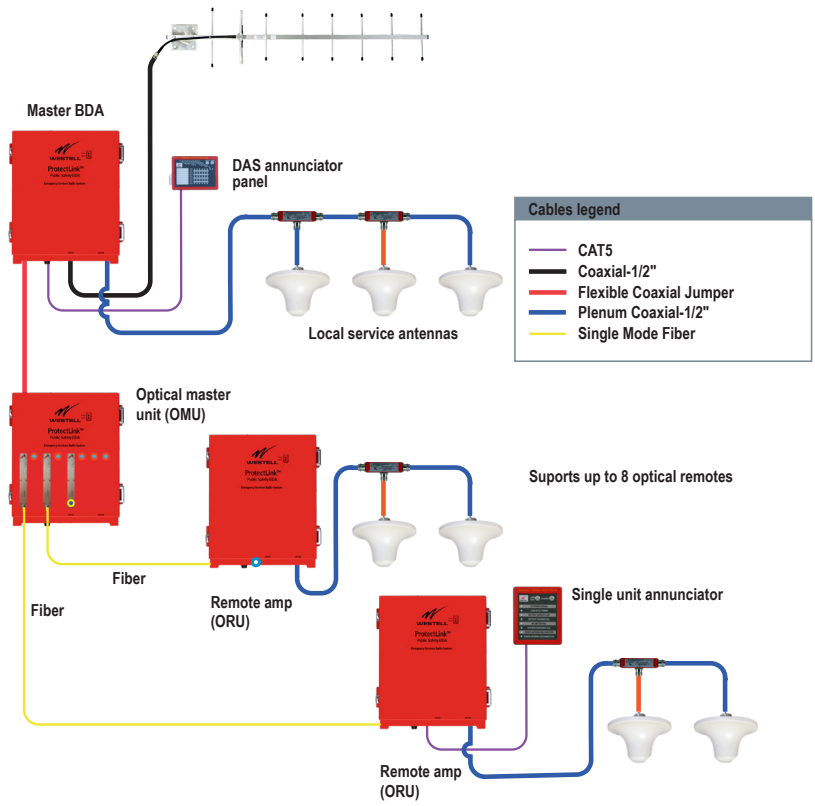
ProtectLink™ Class A/B Fiber DAS



Westell's innovative DAS-ready BDA allows for the addition of fiber remotes for expanded coverage. All models of the CS40 line of BDAs support the addition of an Optical Master Unit (OMU) mounted below or next to the master BDA. The DAS-ready BDA includes all necessary connections to interface with the OMU while keeping a Service RF port to provide the signal to the area around the master BDA. The OMU accommodates up to 8 Optical Radio Modules (ORMs), each connected to an Optical Remote Unit over a single strand of single-mode fiber. This feature allows integrators to purchase only the number of Optical Radio Modules needed to support the number of remotes installed, thereby reducing installation costs.

The master BDA and each remote optical unit will support Ethernet connections to access all devices in the entire network. The DAS remote annunciator provides status on all devices in the network from a single point for immediate identification of faults.

Part Number	Description
CS40-OPTMASTER	Optical master chassis, supports up to 8 radio modules.
CS40-OPTRADIOMOD	Optical radio module, Converts RF to fiber, one per remote.
CS40-734834-00D-AR	Dual-band remote 700/800 MHz, 2.5 watt, class A/B.
CS40-734000-00D-AR	Single-band remote 700 MHz, 2.5 watt, class A/B.
CS40-000834-00D-AR	Single-band remote 800 MHz, 2.5 watt, class A/B.
CS40-734834-00D-BR	Dual-band remote 700/800 MHz, 2.5 watt, class B.
CS40-ANNUNC	BDA Remote annunciator, for monitoring a single device.
CS40-DASANNUNC	DAS Remote annunciator, for monitoring all DAS units.
Master BDAs, see page 3	
CS40-734834-00D-A0	Dual-band 700/800 MHz, 2.5 watt, class A/B.
CS40-734834-00D-B0	Dual-band 700/800 MHz, 2.5 watt, class B.
CS40-730830-00D-A0	Dual-band 700/800 MHz, 1 watt, class A/B.
CS40-734000-00D-A0	Single-band 700MHz, 2.5 watt, class A/B.
CS40-000834-00D-A0	Single-band 800MHz, 2.5 watt, class A/B.



Class B Public Safety BDAs



Westell's Class B public safety BDAs are loaded with features that AHJs prefer, designed to make installation simpler and take up less wall space. These class B BDAs support 700 MHz, 700 FirstNet (Band 14), and 800 MHz, and are Listed to UL2524 and NEMA-4 compliant. They feature a full complement of features, including adjustable frequency passbands, automatic isolation test, independent gain control and more, plus front panel annunciator, built-in BBU circuitry, UpLink squelch, intelligent oscillation management, and options for a cleaner installer-friendly installation. Westell's enhanced line of BDAs include a 2-year warranty. Extended warranty of up to 5 years is available*



Dual-Band 700/800 MHz, Class B	
Part Number	Description
CS14-720-820	80dB gain, 1/2 Watt dual band public safety BDA.
CS14-722-822	90dB gain, 2 Watt dual band public safety BDA.

*For more information on Westell's Limited Product Warranty and Return Policy go to: www.westell.com/warranty

Battery Back-up*



NFPA 1221, compliant Battery Backup solutions for Public Safety BDAs	
Part Number	Description
CS19-BBC-003	NEMA3R rated battery cabinet for use with new CS40 Series ProtectLink class A/B BDAs plus enhanced class B eBDA models, batteries ordered separately.
Batteries	
CS19-PYL12V45FS	12VDC, 45 AH battery must order 2 for BBC-003.
CS19-PYL12V100FT	12VDC, 100 AH battery must order 2 for BBC-003.
CS19-PYL12V160FT	12VDC, 160 AH battery must order 2 for BBC-003.

*For more information on Westell's Limited Product Warranty and Return Policy go to: www.westell.com/warranty

Universal Remote Annunciator

Westell's Universal Remote Annunciator (URA) is a compact, easy to install remote annunciator for ERCES installations that will operate with any manufacturer's BDA/ BBU system. The URA consists of a small NEMA4 Interface Unit (IU) that mounts next to the BDA plus a compact remote annunciator (RA) that can be mounted up to 3000 feet away, connected with a single CAT5/6 cable. Connections to the fire alarm panel pass through the Interface Unit to allow easy connection between the BDA and the FACP. The Interface Unit can support up to 2 remote annunciators.

NFPA Public Safety Remote Annunciator	
Part Number	Description
CS19-URA-003	Universal remote annunciator Includes interface unit and one remote annunciator panel.
CS40-ANNUNC	Second remote annunciator for dual RA installations.



WESTELL



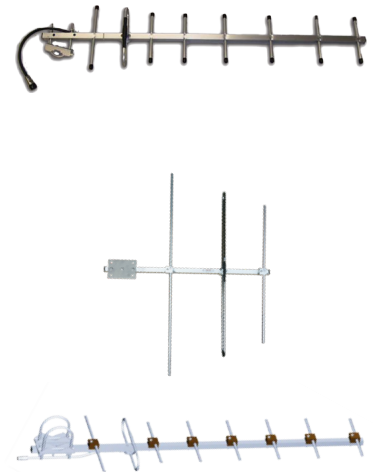
WESTELL.COM

Donor Antennas



Donor antenna selection is an important part of an off-air BDA system. We offer a variety of donor antennas covering from VHF through 960MHz. All are constructed to the highest standards for durability and performance.

Part Number	Model Number	Description
CS03-003-430	CSI-AY/746-896/11	Yagi, 11 dBi gain, public safety 700/800 (746-896) MHz, N-Type (f).
CS03-003-089	CSI-AY/746-896/11	CSI-AY/806-960/11Yagi, 11dBi gain, 800/900 (806-960) MHz, N-Type (f).
CS03-003-090	CSI-AY/746-896/14	CSI-AY/806-960/14Yagi, 14dBi gain, 800/900 (806-960) MHz, N-Type (f).
CS03-024-836	ANT-AY-136-174/6.5-7.5-N(F)	Yagi. 7dBi, VHF band,(136-174 MHz), N female connector.
CS03-025-840	ANT-DY-450G11/N(F)	Yagi. 11dBi, UHF band,(406-512 MHz), N female connector.



Coverage Antennas



Coverage antennas include Omnidirectional and Directional panel antenna supporting frequencies 600-4000 MHz.

Part Number	Model Number	Description
CS03-021-833/N	Ant-O\600-4000-Thinrnd/N(f)	Slim round omnidirectional: Supports 50W input power, 3 dBi gain, wide beamwidth, N-Type (f) connector, -153 dBc PIM, 600-4000 MHz.
CS03-011-429	ClearLink-O/698-2.7K/N	Omnidirectional: Supports 50W input power, 2 dBi gain, wide beamwidth, N-Type (f), connector and flexible mounting options. -153 dBc PIM, 698-2700 MHz.
CS03-012-389	ClearLink-D/698-2.7K/N	Directional panel: Supports 50W input power, 7 dBi gain, N-Type (f) connector and flexible mounting options. -153 dBc PIM, 698-960 MHz.
CS03-019-429	Ant-O\698-2.7k/N(f) Econ	Economy Omnidirectional: Supports 50W input power, 2 dBi gain, wide beamwidth, N-Type (f), and flexible mounting options. -153 dBc PIM, 698-4000 MHz.



*For more information on Westell's Limited Product Warranty and Return Policy go to: www.westell.com/warranty

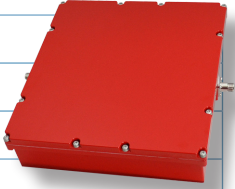


Filters, Crossband Couplers, Duplexers



Westell offers a variety of filters for different applications: to filter out unwanted interference, split or combine different frequency band or separate UL from DL signals.

Part Number	Model Number	Description
CS06-766-842	DPLX PS7/FIRSTNET-N(F)	Duplexer PS700/788-805&758-775/includes FirstNet™-N(f).
CS06-767-843	DPLX PS8/FIRSTNET/-153 DBC-N(F)	Duplexer PS800/806-824&851-869/includes FirstNet-N(f).
CS06-770-846	CBC-150-512/758-940/N(F)	700-800 MHz public safety rated, cross band coupler, 150-512MHz port 1, 758-940MHz port 2 N-female connectors.
CS06-771-847	CBC-150-174/403-512/N(F)	VHF-UHF public safety rated, crossband coupler, 150-174MHz port 1, 403-512MHz port 2 N-female connectors.
CS06-764-838	CBC-PS7(FN)/PS8/N(f)	Public safety rated, cross band 700&800 coupler, 758-805MHz port 1, 806-869MHz port 2 N-female connectors.
CS09-172-434	FLTR-10NF10-811/856	800MHz passband filter. Passes 806-816 & 851-861MHz, rejects adjacent cellular and Sprint 800 bands.
CS09-768-845	FLTR-FIRSTNET/NOTCH-N(F)	FirstNet Notch filter, passes 700 & 800MHz narrow band channels, notches Firstnet band 14.

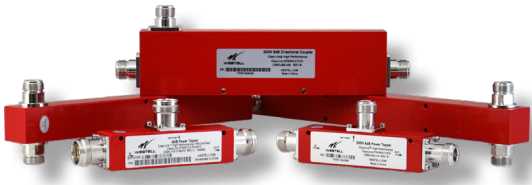


Public Safety Passives



Westell public safety rated passives includes directional couplers, hybrid couplers, power splitters, and powertappers.

Public safety passives cover frequency range 340-2700 MHz or 138-960 MHz and offer low insertion loss, and low VSWR in an IP-65 rated housing. All Westell passives include a 3-year warranty.*



Directional Couplers (340-2700 MHz)

Part Number	Model Number	Description
CS05-488-429	DC5/340-2.7K/N	5dB directional coupler, public safety rated, 300W, N connectors (340-2700 MHz).
CS05-489-429	DC6/340-2.7K/N	6dB directional coupler, public safety rated, 300W, N connectors (340-2700 MHz).
CS05-490-429	DC10/340-2.7K/N	10dB directional coupler, public safety rated, 300W, N connectors (340-2700 MHz).
CS05-491-429	DC15/340-2.7K/N	15dB directional coupler, public safety rated, 300W, N connectors (340-2700 MHz).
CS05-492-429	DC20/340-2.7K/N	20dB directional coupler, public safety rated, 300W, N connectors (340-2700 MHz).
CS05-493-429	DC30/340-2.7K/N	30dB directional coupler, public safety rated, 300W, N connectors (340-2700 MHz).

Hybrid Couplers (340-2700 MHz)

CS05-487-390	HC3/340-2.7K/N	3dB hybrid coupler , public safety rated, 300W, N connectors, (340-2700 MHz).
--------------	----------------	---

Power Splitters (138-960 MHz)

Part Number	Model Number	Description
CV04-500-629	VHF-SPD2/138-960/N(f)	2-Way Power Divider, Public Safety rated, 300W, N connectors (138-960 MHz).
CV04-501-629	VHF-SPD3/138-960/N(F)	3-Way Power Divider, Public Safety rated, 300W, N connectors (138-960 MHz).
CV04-502-629	VHF-SPD4/138-960/N(f)	4-Way Power Divider, Public Safety rated, 300W, N connectors (138-960 MHz).

*For more information on Westell's Limited Product Warranty and Return Policy go to: www.westell.com/warranty





Power Splitters (340-2700 MHz)

CS04-472-429	SPD2/340-2.7K/N	2-Way Power Divider, Public Safety rated, 300W, N connectors (340-2700 MHz).
CS04-473-429	SPD3/340-2.7K/N	3-Way Power Divider, Public Safety rated, 300W, N connectors (340-2700 MHz).
CS04-474-429	SPD4/340-2.7K/N	4-Way Power Divider, Public Safety rated, 300W, N connectors (340-2700 MHz).

Power Tappers (138-960 MHz)

CV05-522-614	VHF-PT3/138-960/N(f)	3dB Power Tapper, Public Safety rated, 200W, N connectors (138-960 MHz).
CV05-523-614	VHF-PT5/138-960/N(f)	5dB Power Tapper, Public Safety rated, 200W, N connectors (138-960 MHz).
CV05-524-614	VHF-PT6/138-960/N(f)	6dB Power Tapper, Public Safety rated, 200W, N connectors (138-960 MHz).
CV05-526-614	VHF-PT8/138-960/N(f)	8dB Power Tapper, Public Safety rated, 200W, N connectors (138-960 MHz).
CV05-527-614	VHF-PT10/138-960/N(f)	10dB Power Tapper, Public Safety rated, 200W, N connectors (138-960 MHz).
CV05-528-614	VHF-PT13/138-960/N(f)	13dB Power Tapper, Public Safety rated, 200W, N connectors (138-960 MHz).
CV05-529-614	VHF-PT15/138-960/N(f)	15dB Power Tapper, Public Safety rated, 200W, N connectors (138-960 MHz).
CV05-530-614	VHF-PT20/138-960/N(f)	20dB Power Tapper, Public Safety rated, 200W, N connectors (138-960 MHz).
CV05-531-614	VHF-PT30/138-960/N(f)	30dB Power Tapper, Public Safety rated, 200W, N connectors (138-960 MHz).

Power Tappers (340-2700 MHz)

Part Number	Model Number	Description
CS05-494-114	PT3/340-2.7K/N	3dB Power Tapper, Public Safety rated, 200W, N connectors (340-2700 MHz) .
CS05-478-114	PT5/340-2.7K/N	5dB Power Tapper, Public Safety rated, 200W, N connectors (340-2700 MHz).
CS05-479-114	PT6/340-2.7K/N	6dB Power Tapper, Public Safety rated, 200W, N connectors (340-2700 MHz).
CS05-480-114	PT7/340-2.7K/N	7dB Power Tapper, Public Safety rated, 200W, N connectors (340-2700 MHz).
CS05-481-114	PT8/340-2.7K/N	8dB Power Tapper, Public Safety rated, 200W, N connectors (340-2700 MHz).
CS05-482-114	PT10/340-2.7K/N	10dB Power Tapper, Public Safety rated, 200W, N connectors (340-2700 MHz).
CS05-483-114	PT13/340-2.7K/N	13dB Power Tapper, Public Safety rated, 200W, N connectors (340-2700 MHz).
CS05-484-114	PT15/340-2.7K/N	15dB Power Tapper, Public Safety rated, 200W, N connectors (340-2700 MHz).
CS05-485-114	PT20/340-2.7K/N	20dB Power Tapper, Public Safety rated, 200W, N connectors (340-2700 MHz).
CS05-486-114	PT30/340-2.7K/N	30dB Power Tapper, Public Safety rated, 200W, N connectors (340-2700 MHz).

* For more information on Westell's Limited Product Warranty and Return Policy go to: www.westell.com/warranty

**Let's Talk More.
Contact Westell Today!**

Westell Technologies
Call: (800) 377-8766
E-mail: info@westell.com
Visit: www.westell.com



Follow on Twitter @Westell_Tech



Follow on LinkedIn, Westell



Subscribe to YouTube Channel, Westell Technologies Inc.

