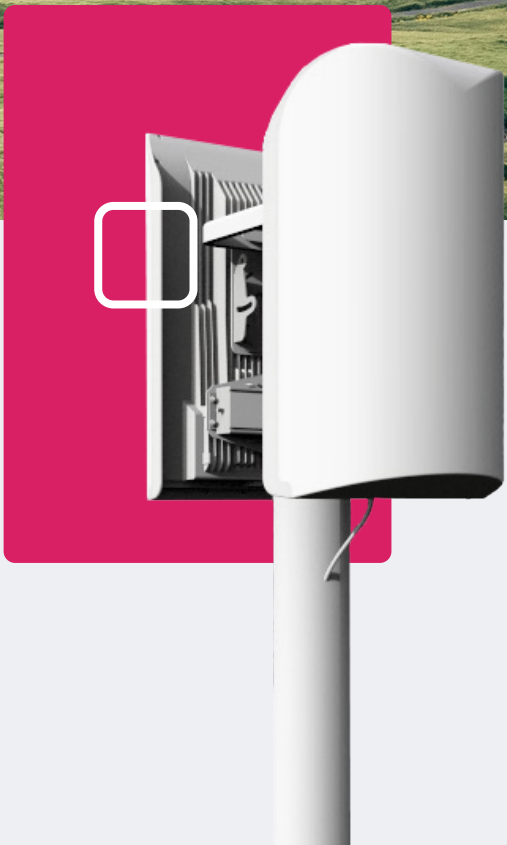




WIRELESS SOLUTIONS FOR  
**ANYONE, ANYWHERE.**

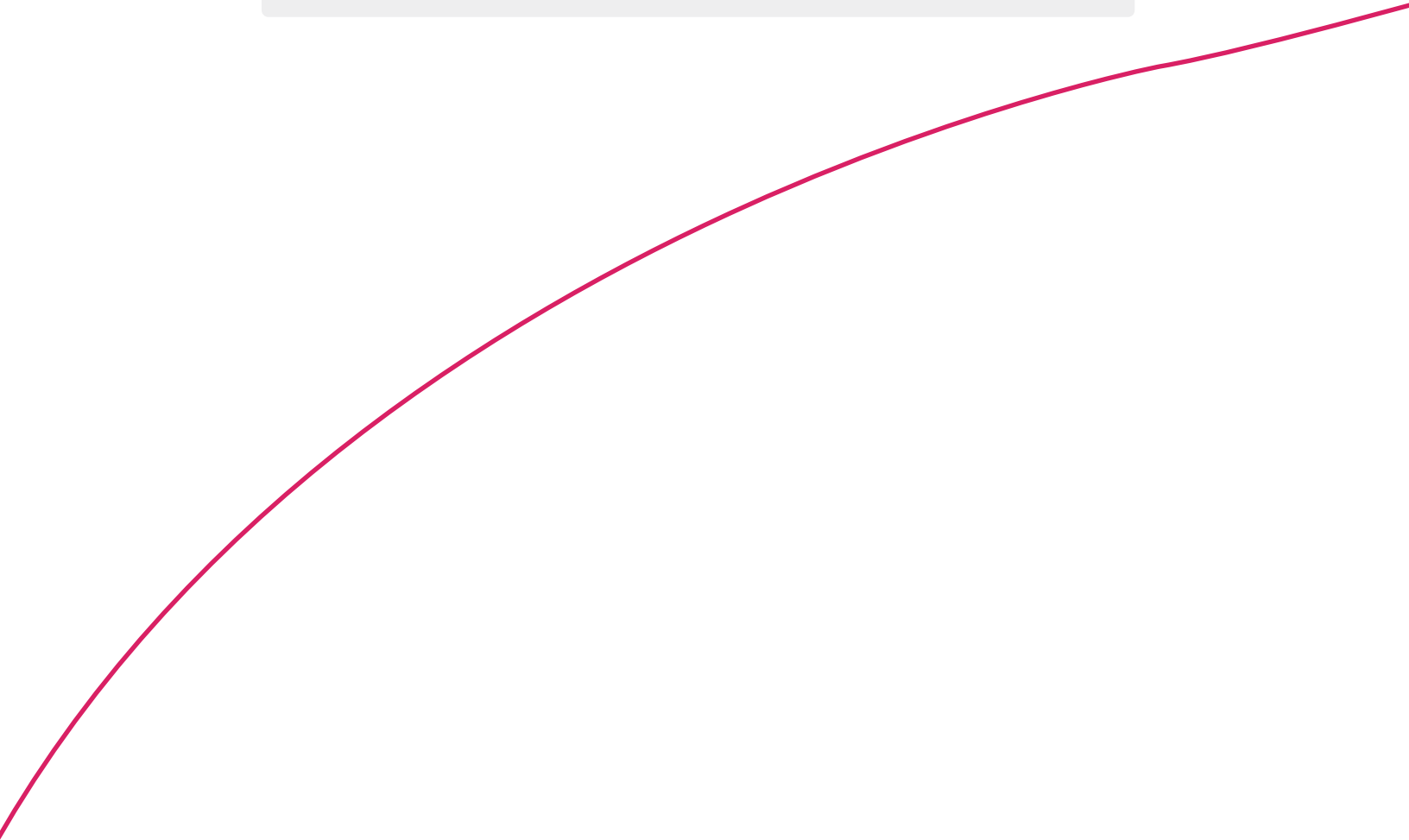


FW-300i

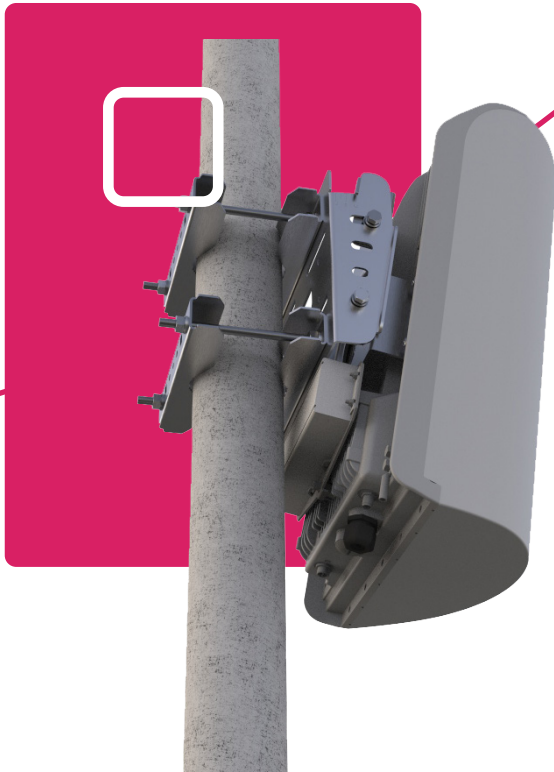
# YOUR NETWORK. OUR SOLUTIONS.

## About BLiNQ Networks

BLiNQ Networks is a pioneer manufacturer of CBRS-certified fixed access and mobile broadband wireless equipment, providing industry-leading price & performance in LTE and 5G-ready solutions.



# FW-300i

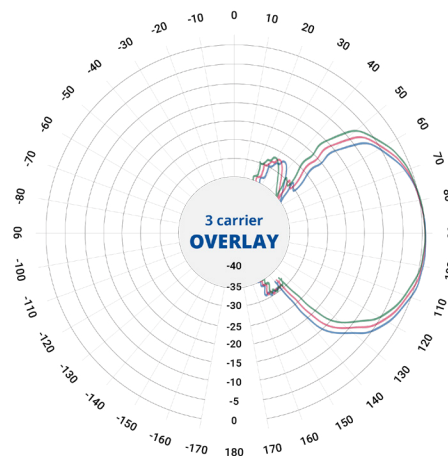
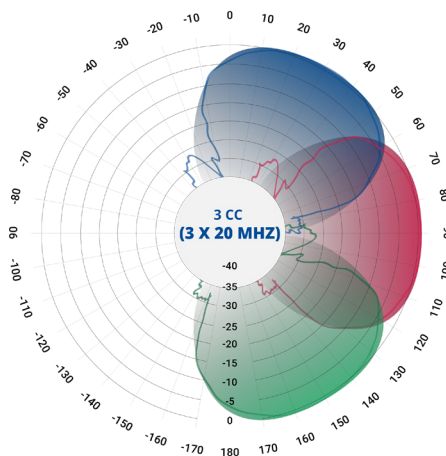


## **3X COVERAGE & CAPACITY AT 1/3RD THE COST**

The FW-300i is a single piece of hardware that is easy to set up, fits anywhere, and provides incredible network capacity. This simple solution fits almost anywhere. From the side of a building or water tower and is ready to go immediately, giving 3x the capacity at 1/3rd the price. Whether you want to expand your network to remote communities or to busy urban intersections, this OnGo Certified product helps you bring LTE connectivity to anyone, anywhere.

# FW-300i

## USE CASE CONFIGURATIONS



MODEL SERIES	
<b>BASE STATION</b>	FW-300i
<b>RADIO SPECIFICATION</b>	
<b>Frequency Band</b>	3.40-3.80 GHz (LTE Band 42/43) 3.55-3.70 GHz (LTE Band 48 - CBRS)
<b>Transmit Power</b>	17 dBi Integrated Antenna - up to 56 dBm EIRP/Sector LTE Band 42/43: -10 dBm up to +36 dBm per TX port (add 3 dB for aggregate power) LTE Band 48: -10 dBm up to +33 dBm (add 3 dB for aggregate power)
<b>Channel Bandwidth</b>	3 x 10 MHz or 3 x 20 MHz (15 MHz*)
<b>MIMO</b>	6TX x 6RX per unit 2TX x 2RX per sector (several possible MIMO configurations)
<b>LTE Compliance</b>	3GPP Release 10 (SW upgrade to Release 13)
<b>PERFORMANCE &amp; ATTRIBUTES</b>	
<b>Connected/Active UEs</b>	Up to 96 active users per sector; 288 active users per box
<b>Carrier Aggregation</b>	Supports contiguous and non-contiguous 1CC, 2CC, 3CC, covers full CBRS band (150 MHz) and full ETSI (B42/43) spectrum
<b>Throughput DL TDD Config 2-7 (default)</b>	105 Mbps
<b>Throughput UL TDD Config 2-7 (default)</b>	13 Mbps
<b>Operating Mode</b>	TD-LTE
<b>Power Consumption</b>	180 W maximum
<b>Power</b>	48 VDC
<b>Connectivity</b>	Default: 1 x Copper 1000BaseT; Optional: 1 x SFP
<b>Synchronization</b>	Integral GPS antenna (GPS, GLONASS, BeiDou), Optional: External GPS, 1588v2
<b>CBRS</b>	CBSD Type B SAS Support
<b>Embedded EPC</b>	Software Option

# FW-300i

## SPECIFICATIONS



OA&M		
	<b>Configuration</b>	WebUI/CLI, radio and Ethernet performance monitoring
	<b>EMS Integration</b>	SNMP v2c
	<b>OAM Protocols</b>	NETCONF, HTTP(S), (S)FTP, SSH, TR-069/TR-196
ANTENNA SPECIFICATIONS CBRS BANDS 42/43/46/48		
	<b>Gain</b>	17 dBi
	<b>Azimuth coverage (-5 dB)</b>	180°
	<b>Azimuth Beamwidth (-3 dB)</b>	45°
	<b>Azimuth Beamwidth (-5 dB)</b>	60°
	<b>Elevation Beamwidth (- 3 dB)</b>	10°
	<b>Electrical Downtilt</b>	0°
	<b>Azimuth Sidelobe</b>	< -25 dB (Typ.)
	<b>Front-to-Back Ratio @ 180°</b>	> 30 dB (Typ.)
	<b>Co-Polar Port-to-Port Isolation</b>	15 dB (Typ.)
	<b>Cross-Polarization Port-to-Port Isolation</b>	> 20 dB (Typ.)
	<b>Max. VSWR</b>	1.5:1
	<b>Polarization</b>	Dual Pol 45°
	<b>Lightning Protection</b>	DC Ground
MECHANICAL		
	<b>Dimensions (LxWxD)</b>	13.78" x 22.4" x 8.9" (350 mm x 570 mm x 227 mm)
	<b>Survival Wind Speed</b>	> 124 mph (200 km/hour)
	<b>Weight</b>	26.5 lbs. (12.0 Kg)
	<b>Operational Temperature</b>	-40 to 60 °C (-40 to 140 °F )
	<b>Mechanical Uptilt/Downtilt</b>	0° - 10°



---

**CONTACT US**

Tel: +1 416.214.4204  
info@blinqnetworks.com  
www.blinqnetworks.com

140 Renfrew Drive, Markham  
ON, L3R 6B3, Canada  
© 2018-2020 BLiNQ Networks a CCI company