

Westell® | 380-6000 MHz Power Tappers

Low PIM, 5G Ready



General Information

Westell Power Tappers are an important part of a distributed antenna system by splitting power unequally. With tap values from 3.0 to 30dB they allow even distribution of RF power throughout a DAS.

Westell's Power Tappers support 380 MHz through LAA frequencies with an operating range of 380 to 6000 MHz. Features low insertion loss, small form factor and capable of handling 300 watts average power. Connector style is 4.3-10 female.

Product Highlights

- Wide Frequency Band
- 2G/3G/4G/LTE/5G Coverage
- Low Insertion Loss
- Low VSWR
- Low Passive Intermodulation
- IP67 Ingress Protection

Applications

- Indoor & Outdoor
- Indoor DAS RF Power Distribution

Ordering Information

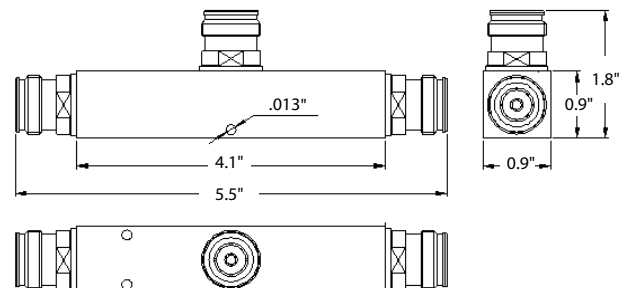
Part Number	Description
CS65-550-853	3dB Power Tapper, 380-6000MHz, -161 dBc, 4.3-10(f)
CS65-551-853	5dB Power Tapper, 380-6000MHz, -161 dBc, 4.3-10(f)
CS65-552-853	6dB Power Tapper, 380-6000MHz, -161 dBc, 4.3-10(f)
CS65-554-853	8dB Power Tapper, 380-6000MHz, -161 dBc, 4.3-10(f)
CS65-556-853	10dB Power Tapper, 380-6000MHz, -161 dBc, 4.3-10(f)
CS65-557-853	13dB Power Tapper, 380-6000MHz, -161 dBc, 4.3-10(f)
CS65-558-853	15dB Power Tapper, 380-6000MHz, -161 dBc, 4.3-10(f)
CS65-559-853	20dB Power Tapper, 380-6000MHz, -161 dBc, 4.3-10(f)
CS65-560-853	30dB Power Tapper, 380-6000MHz, -161 dBc, 4.3-10(f)



CS65-556-853 shown

Mechanical Drawing

(Dimensions in Inches)



Mounting Bracket



WESTELL

WESTELL.COM

Westell® | 380-6000 MHz Power Tappers

Low PIM, 5G Ready



Specifications

Frequency (MHz)	380-960 MHz & 1710-2700 MHz & 3400-3800 MHz & 5100-6000 MHz								
Ratio, nominal (dB Δ between outputs)	2:1, 3dB	3:1, 5dB	4:1, 6dB	6:1, 8dB	10:1, 10dB	20:1, 13dB	30:1, 15dB	100:1, 20dB	1000:1, 30dB
Coupling(dB) 5100-6000 MHz	5 ±0.6	6 ±0.5	7 ±0.5	8 ±0.5	10.2 ±0.6	13.2 ±0.6	15.1 ±1.0	20.1 +4/-0	30.1 +4/-0
Coupling (dB) 3400-3800 MHz	5 +0/-1.5	6 +0/-1.5	7 +0/-1.5	8 +0/-1.5	10.2 +0/-1.5	13.2 0.6	15.1 +0/-1.5	20.1 +2/-0	30.1 +2/-1
Coupling (dB) 1710-2700 MHz	5.0 ±0.5	6 ±0.5	7 ±0.5	8 ±0.5	10.2 ±0.5	13.2 ±0.5	15.1 ±0.7	20.1 ±0.7	30.1 ±0.7
Coupling (dB) 380-960MHz	5 ±0.5	6 ±0.5	7 ±0.5	8 ±0.5	10.8 ±0.6	13.8 ±0.6	15.8 ±0.7	20.6 ±0.7	30.6 ±0.7
Through Loss (dB)	1.80	1.30	1.0	0.7	0.4	0.2	0.1	0.1	0.1
Input VSWR max(700-2500MHz)	1.30	1.20	1.20	1.20	1.30	1.20	1.20	1.20	1.20
Input VSWR max(380-6000)	1.50	1.30	1.30	1.30	1.30	1.30	1.30	1.20	1.20
PIM (dBc)*	≤ -161dBc @ 2 x 43dBm *								
Power Rating (W)	500								
Impedance (Ω)	50								
Connector	4.3-10 Female								
Color	Black								
Working Temperature (deg C)	-35 to +65								
Application	Indoor & Outdoor, IP67								
Relative Humidity	5%-95%								
Dimensions	5.5"L x 0.9"W x 1.8"H								
Mounting Method	Bracket with screw included								

*PIM measured @ 900 and 1800 MHz

