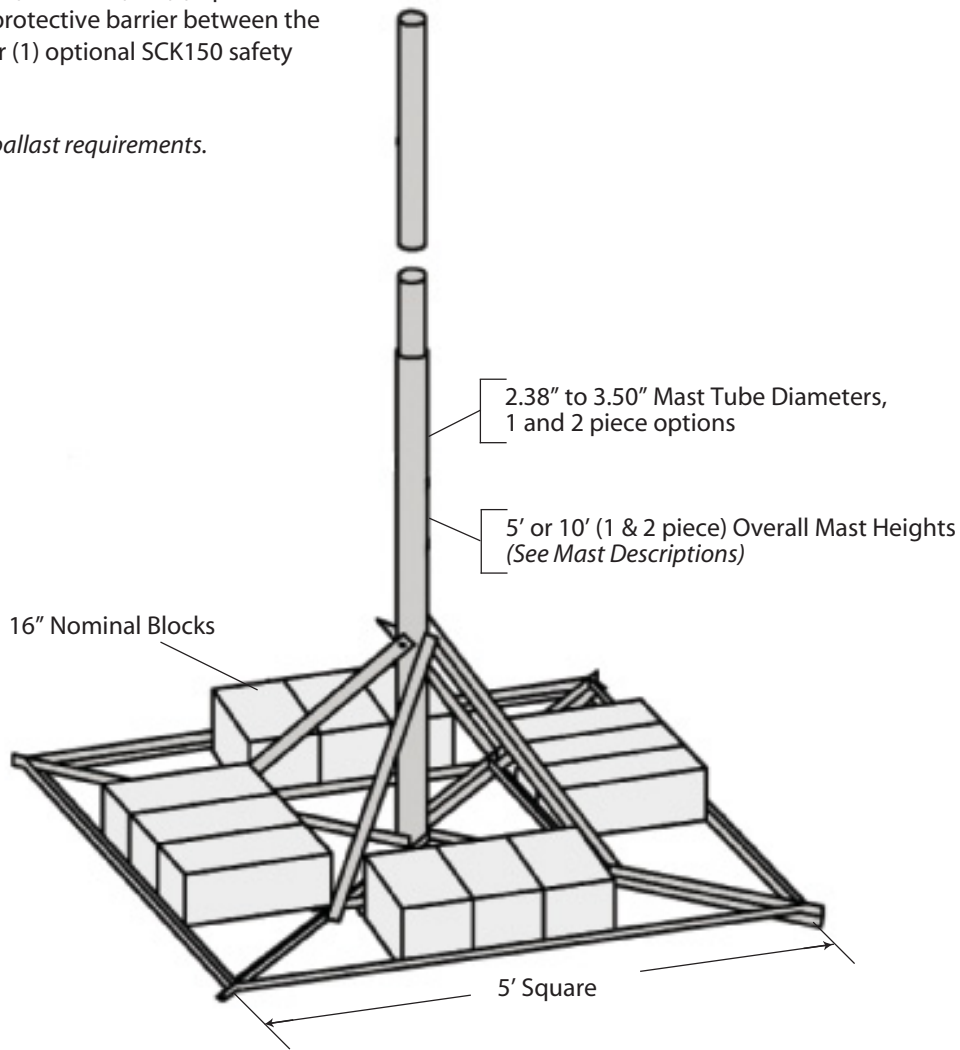


JRM NON-PENETRATING

The JRM ships broken down on one skid and weighs approximately 50 lbs. when assembled. The JRM is galvanized for corrosion protection. The JRM is used in cellular, PCS, broadband and other applications.

Order (1) optional JRMMAT (1/8" thick) or (1) optional JRMPAD (3/8" thick) for a protective barrier between the mount and the roof. Order (1) optional SCK150 safety cable kit (3/16" x 150').

Refer to pages 255-256 for ballast requirements.



MAST SPECIFICATIONS

Mount Part No.	Mast Part No.	Mast Description & Height
JRM23805	FZ1755	2.38" O.D. x 0.154" wall x 5.0' (HDG) (1 piece)
JRM23855	FZ1753 / FZ1754	2.38" O.D. x 0.154" wall x 10.0' (HDG) (2 pieces)
JRM23810	FZ1756	2.38" O.D. x 0.154" wall x 10.0' (HDG) (1 piece)
JRM27505	FZ1757	2.88" O.D. x 0.203" wall x 5.0' (HDG) (1 piece)
JRM27555	FZ1758 / FZ1759	2.88" O.D. x 0.203" wall x 10.0' (HDG) (2 pieces)
JRM27510	FZ1760	2.88" O.D. x 0.203" wall x 10.0' (HDG) (1 piece)
JRM35010	FZ1761	3.50" O.D. x 0.216" wall x 10.0' (HDG) (1 piece)

HDG = Hot-dip galvanized mast